

THE OVERLOOK AT JOHNSTOWN FARMS

MARION | RESIDENCE 39208

APPROX. 2,410 SQ. FT. | 2-STORY | 3-5 BEDROOMS | 2.5 BATHROOMS | 2- TO 3-BAY GARAGE



ELEVATION A



ELEVATION B

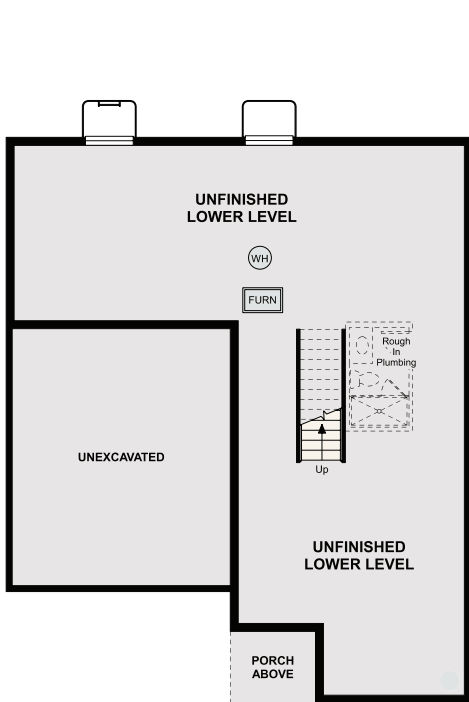


ELEVATION C

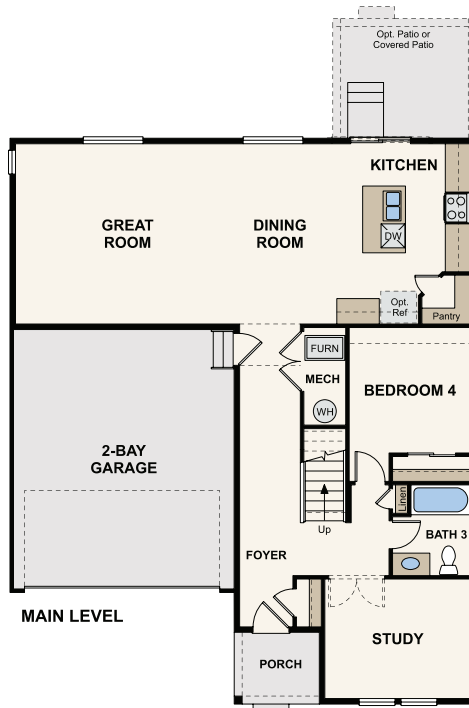


Prices, Residences, and terms are effective on the date of publication and subject to change without notice. Square footage/acreage shown is only an estimate and actual square footage/acreage will differ. Buyer should rely on his or her own evaluation of usable area. Depictions of homes or other features are artist conceptions. Hardscape, landscape, and other items shown may be decorator suggestions that are not included in the purchase price and availability may vary. ©2024 Century Communities, Inc. Rev. 10/23/2024

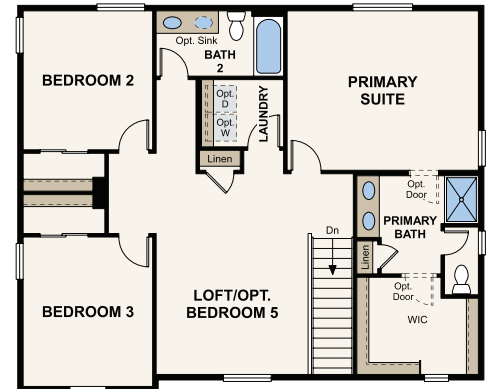
Floor Plans



OPT. FULL LOWER LEVEL



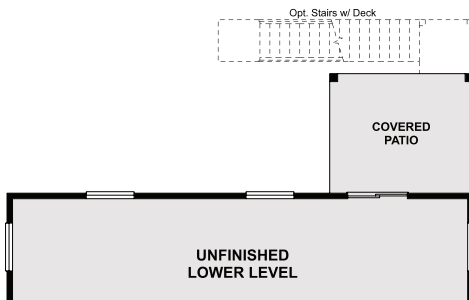
MAIN LEVEL



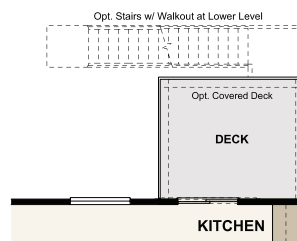
UPPER LEVEL



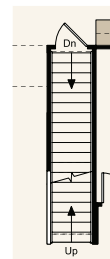
OPT. BEDROOM 5



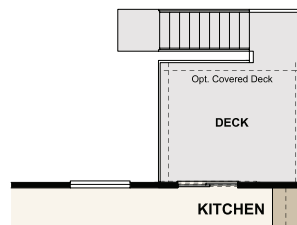
OPT. WALKOUT AT LOWER LEVEL



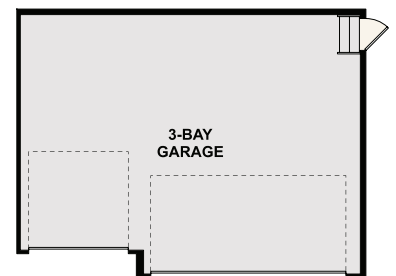
OPT. DECK



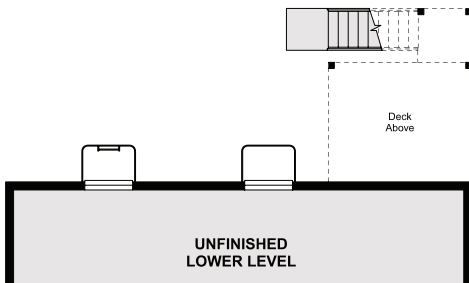
STAIRS TO OPT. FULL LOWER LEVEL



OPT. DECK W/ GARDEN LEVEL



OPT. 3-BAY GARAGE



OPT. GARDEN LEVEL

FLOOR RESIDENCE



Prices, Residences, and terms are effective on the date of publication and subject to change without notice. Square footage/acreage shown is only an estimate and actual square footage/acreage will differ. Buyer should rely on his or her own evaluation of usable area. Depictions of homes or other features are artist conceptions. Hardscape, landscape, and other items shown may be decorator suggestions that are not included in the purchase price and availability may vary. ©2024 Century Communities, Inc. Rev. 10/23/2024